

Small mammal camera trap ID guide

Gippsland, Grampians & Otways

Phoebe A. Burns



Identifying small mammals in hand can be tricky. Identifying small mammals in blurry camera trap images can be near impossible and can require a different set of characteristics. Some species are glaringly obvious, others are a mix of knowing what occurs in the area and getting the feel for how different species pose or how different flash types reflect off of subtly different fur.

Here are a selection of sample images of small mammal species that I commonly encounter in Gippsland, the Grampians, and the Otways. Accompanying the images are a few notes to help identify each species. Not all small mammal species that are present in those areas are detailed here.

Need help identifying a rodent in Victoria? Send me an email - be sure to include the location - nativemouse.ID@gmail.com

Want more? Check out Bronwyn Hradsky's camera trap image guide at: <https://wildzoologist.wordpress.com/camera-trap-id/>

Species	page
Agile antechinus (<i>Antechinus agilis</i>)	2
Dusky Antechinus (<i>A. mimetes</i> fka <i>A. swainsonii</i>)	3
Swamp Antechinus (<i>A. minimus</i>)	4
Eastern Pygmy Possum (<i>Cercartetus nanus</i>)	5
House Mouse (<i>Mus musculus</i>)	6
Smoky Mouse (<i>Pseudomys fumeus</i>)	7
New Holland Mouse (<i>P. novaehollandiae</i>)	8
Bush Rat (<i>Rattus fuscipes</i>)	9
Swamp Rat (<i>R. lutreolus</i>)	10
Black Rat (<i>R. rattus</i>)	11
White-footed Dunnart (<i>Sminthopsis leucopus</i>)	12

Other small mammal species present in some of these areas:

Heath Mouse (*P. shortridgeii*)
Broad-toothed Rat (*Mastacomys fuscus*)
Brown Rat (*R. norvegicus*)
Yellow-footed Antechinus (*A. flavipes*)
Feathertail Glider (*Acrobates pygmaeus*)

Bait: oats, peanut butter, golden syrup and vanilla essence

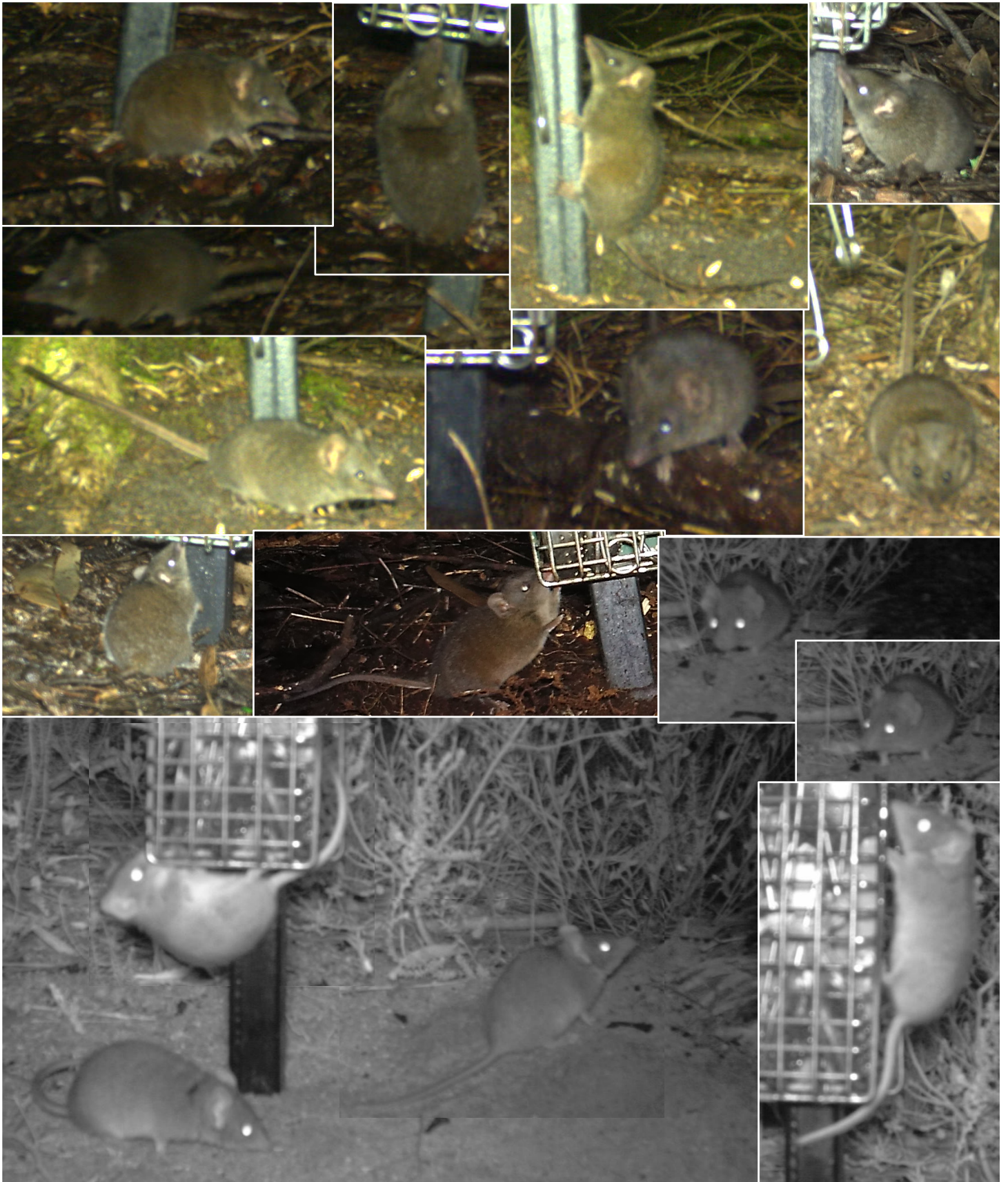
Camera types: Reconyx Hyperfire HC550 white-flash, HC500 infrared, and PC850 white-flash, HyperFire 2 HP2W white-flash, UltraFire WP9 white-flash, and PixController white-flash

Images collected during surveys for New Holland Mice and Smoky Mice with Museums Victoria, Arthur Rylah Institute or Zoos Victoria Animal Ethics Committee approval and under DELWP permit #1000 7606, #1000 7810, #1000 8451, #1000 7943, or #1000 7493. All baited camera trapping in Victoria requires a DELWP research permit.

New Holland Mouse, Smoky Mouse, Bush Rat, Black Rat and House Mouse IDs adapted from: Burns et al (2018) Identification of threatened rodent species using infrared and white-flash camera traps. *Australian Mammalogy*, 2018, **40**, 188–197
<https://doi.org/10.1071/AM17016>

Agile Antechinus (*Antechinus agilis*)

- Much smaller than *A. mimetes*, *A. minimus*
- Similar species: *A. flavipes*
- Small pointed head



Dusky Antechinus (*Antechinus mimetes*)

- Big chunky, dumpy body
- Variable colouration from medium to dark brown
- Small head for body size compared to *A. agilis*
- Beady little eyes
- Smaller, lower set ears than *A. agilis*



Swamp Antechinus (*Antechinus minimus*)

- Much larger than *A. agilis*, similar size to *A. mimites*
- Near impossible to distinguish from *A. mimites* on infrared images
- Heavy rump
- Ginger colouring on rump and flanks



Eastern Pygmy Possum (*Cercartetus nanus*)

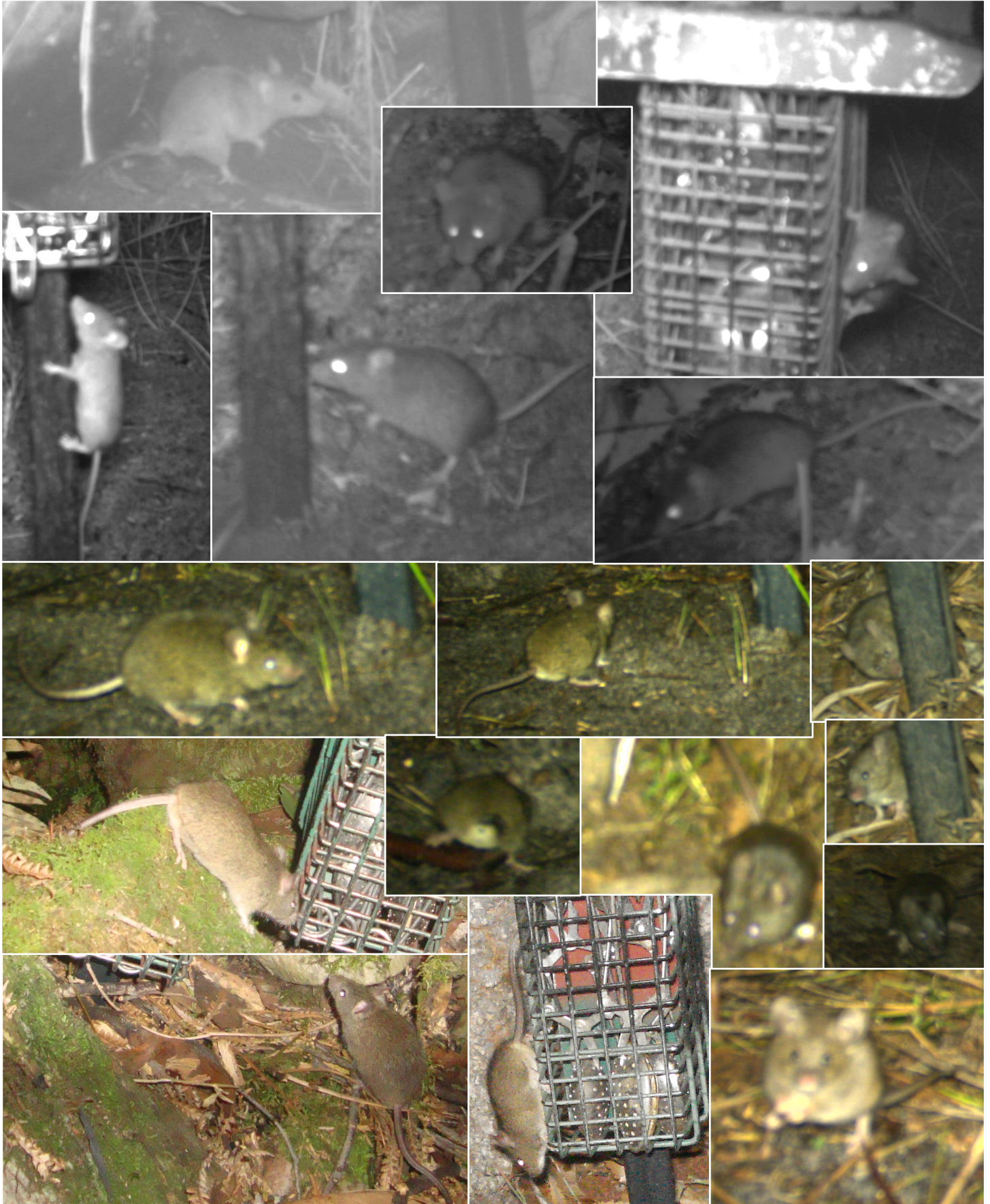
- Impossibly cute; rosy pink nose
- Wide, alert eyes; large, rounded ears
- Pointed nose, but much shorter than dunnarts and antechinus
- Thick, chunky tail base
- Very soft looking, occasional fat rolls
- Possum hands - toes spread 2 – 3



House mouse

(*Mus musculus*)

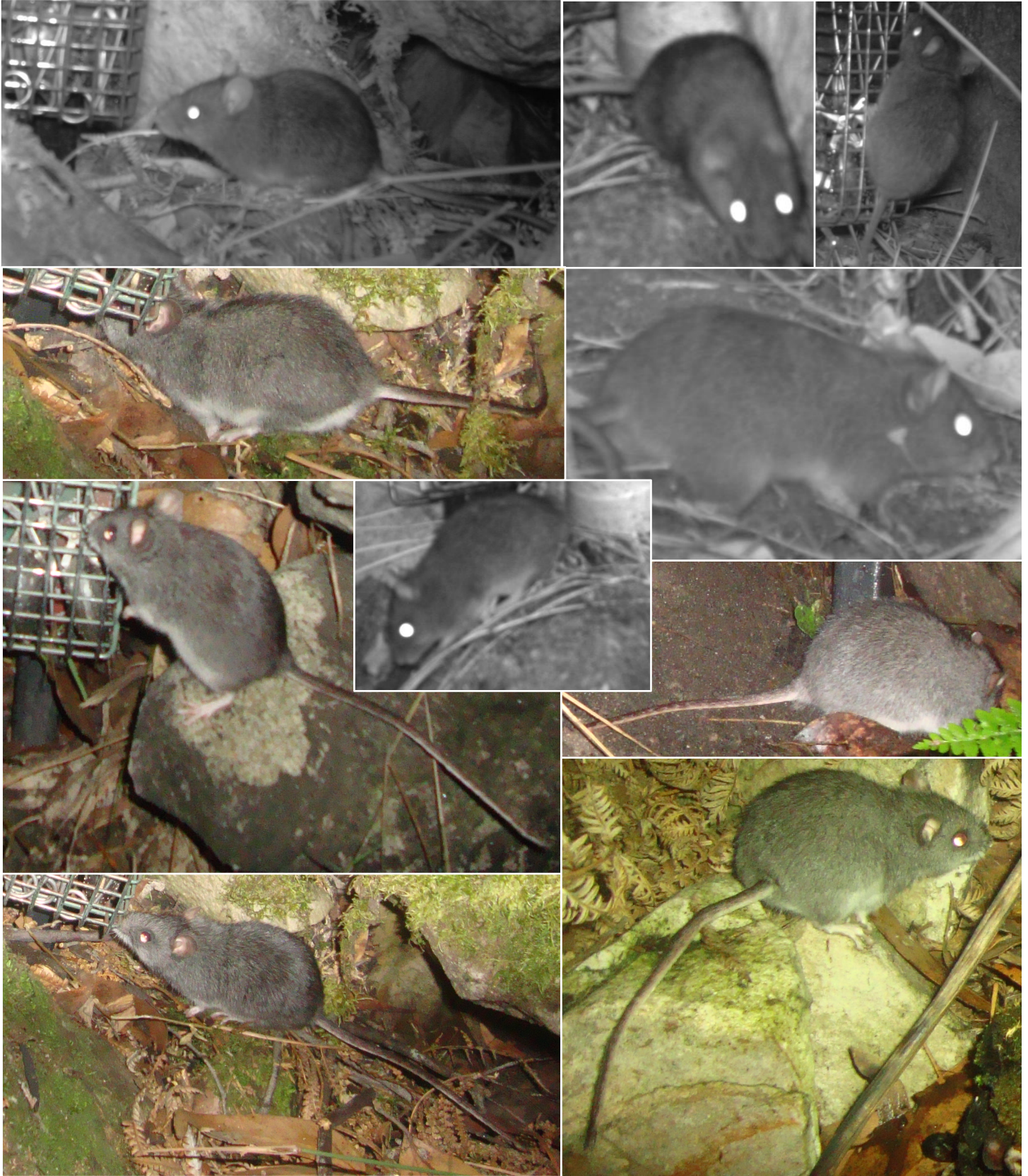
- Skinny head and body, tapers from nose through body more so than other rodents
- Thin, wormy tail
- Tiny face and beady eyes
- Fur often looks sleek



Smoky mouse

(*Pseudomys fumeus*)

- Colouration obvious in white-flash: grey body, white belly, pink ears and feet, bicoloured tail often visible
- Tail > head-body length; wide at base. Some images below are of individuals with cropped tails (common in *Pseudomys*)
- Hard to discern from *R. fuscipes* in infrared images unless good tail shots



New Holland mouse

(*Pseudomys novaehollandiae*)

- Sandy upper body, white belly and feet, bicoloured tail often visible
- Tail > head-body length
- No neck, plump little body
- Chunkier than *M. musculus*



Bush rat

(*Rattus fuscipes*)

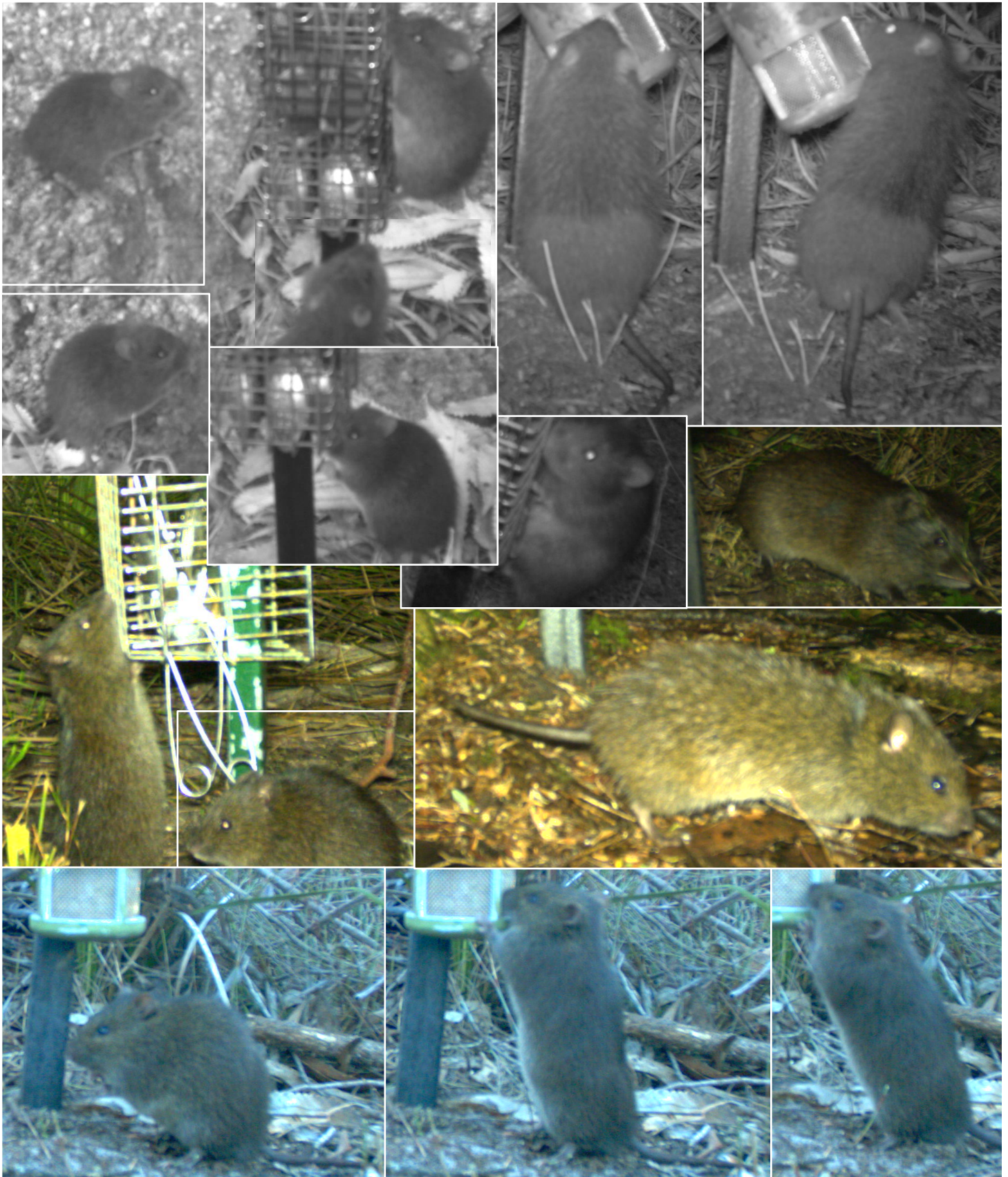
- More elongated than *R. lutreolus*, but chunkier and neckless compared to *R. rattus*
- Tail similar to head-body length
- Colour varies among locations from sandy brown - brown - greyish



Swamp Rat

(*Rattus lutreolus*)

- Very dark all over - fur, feet, tail. Belly fur slightly lighter but still darker than most others
- Small rounded ears
- Tail < body
- Often out during afternoon
- Slimmer than *M. fuscus*, but still a bit hefty



Black Rat

(*Rattus rattus*)

- Colour varies from dirty, grizzled brown to black
- Tail > head-body length; looks heavy and scaled
- Head masculine – strong jawline
- Very large ears – would touch the eyes if folded down



White-footed Dunnart (*Sminthopsis leucopus*)

- Dark widows peak
- Nose pointed but more plump than *Antechinus* sp. when seen front-on
- Pointier head than *C. nanus*
- Colouration similar to *P. novaehollandiae*
- Dark eye rings
- Rarely show interest in the bait

